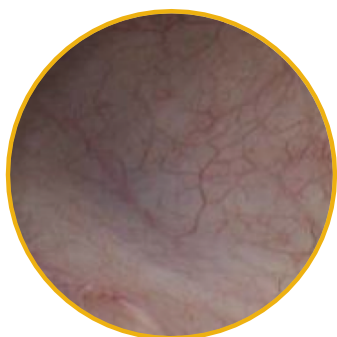


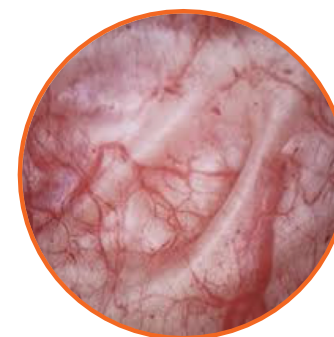
Even Watchful Waiting Comes with Risks



Healthy Bladder



Bladder Worsens



Permanently Damaged

- Bladder outlet obstruction could result in irreversible bladder damage if left untreated^{1,2}
- LUTS due to BPH often progresses when left untreated³
- 87% of men who elect watchful waiting experience a worsening of symptoms over a 4 year time period⁴
- Men who delay TURP with watchful waiting have significantly worse outcomes than those who had TURP sooner⁵

1 Tubaro, Drugs Aging 2003; 20(3): 185-195; 2 Mirone, Eur Urol 2007; 51: 57-66; 3 Maserejian, J Urol 2014; 191(1): 107-113; 4 Djavan, Urology 2004; 64: 1144-1148; 5 Flanigan, J Urol 1998; 160: 12-17